

HELIOS 2/1 FLEX P2

SKU: 034CRHEL2/1FLP2



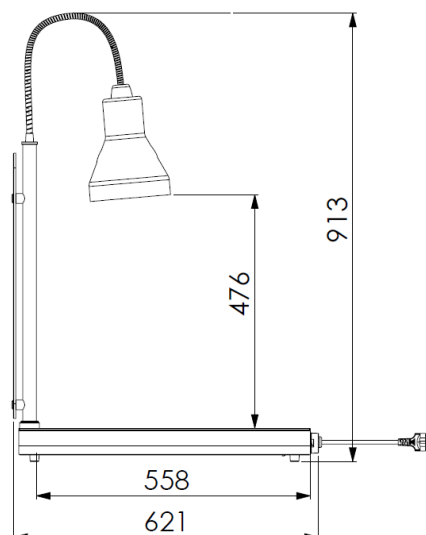
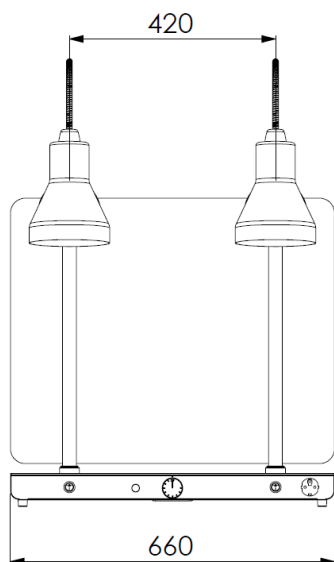
AISI 304 stainless steel carving station GN 2/1 size with 2 white infrared lamps mounted with flexible tube with a modern design lampshade. Heated warming plate with mechanical thermostat (30°/ 90°) and indicator light. Infrared lamps with independent lighting switch. Acrylic glass sneezeguard standard.

GN



2 GN 1/1

1250 W



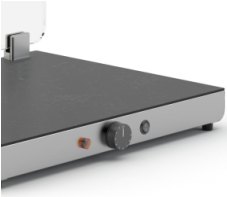
Pannellatura/Paneling

HOT PLATE



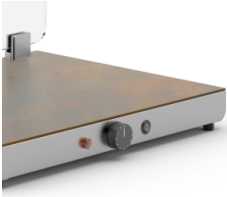
STAINLESS STEEL

HOT PLATE



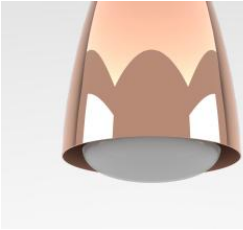
GRES - LAVA

HOT PLATE



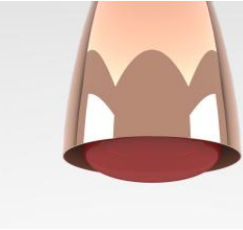
GRES - OXIDE

INFRARED LAMP



WHITE

INFRARED LAMP



RED

Optional/Options

ST2/LA



Covering for hot plate
in porcelain stoneware
GN 2/1 size, lava

ST2/OX



Covering for hot plate
in porcelain stoneware
GN 2/1 size, oxide

OPT. UK EN



Surcharge for UK plug

RL



Red infrared lamp

Finiture/Finishes

CR



Chrome