



HELIOS 1/1 FLEX P2

SKU: 034CRHEL1/1FLP2

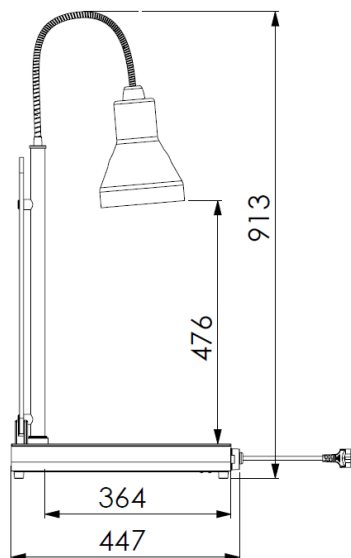
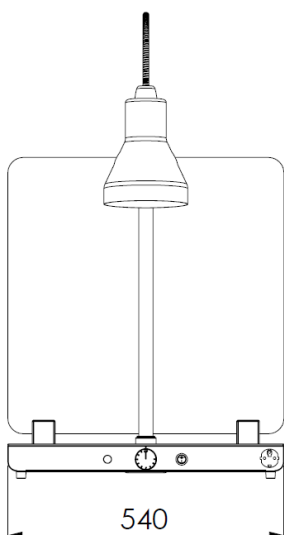
AISI 304 stainless steel carving station GN 1/1 size with single red infrared lamp mounted with flexible tube with a modern design lampshade. Heated warming plate with mechanical thermostat (30°/ 90°) and indicator light. Infrared lamp with independent lighting switch. Acrylic glass sneezeguard standard.

GN



1 GN 1/1

1000 W



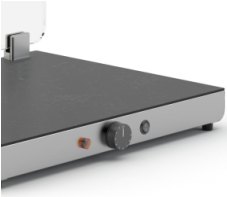
Pannellatura/Paneling

HOT PLATE



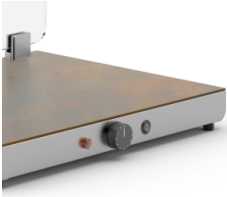
STAINLESS STEEL

HOT PLATE



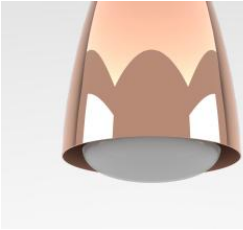
GRES - LAVA

HOT PLATE



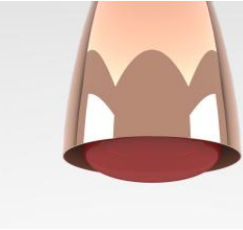
GRES - OXIDE

INFRARED LAMP



WHITE

INFRARED LAMP



RED

Optional/Options

ST1/LA



Covering for hot plate
in porcelain stoneware
GN 1/1 size, lava

ST1/OX



Covering for hot plate
in porcelain stoneware
GN 1/1 size, oxide

OPT. UK EN



Surcharge for UK plug

RL



Red infrared lamp

Finiture/Finishes

CR



Chrome