



ATHENA 3 PC/HALO

SKU: 01000HALO4FPC

Heated buffets with laminated wood structure and upper fixed sneezeguard. Capacity 3 GN 1/1 (pans not included). Tempered black glass countertop with stainless steel frame. Dry heating with digital thermostat (no induction). Power cable equipped with industrial plug. Halogen lamps with independent lighting switch, white light.



Ø75

GN

3 GN 1/1 up to h.200



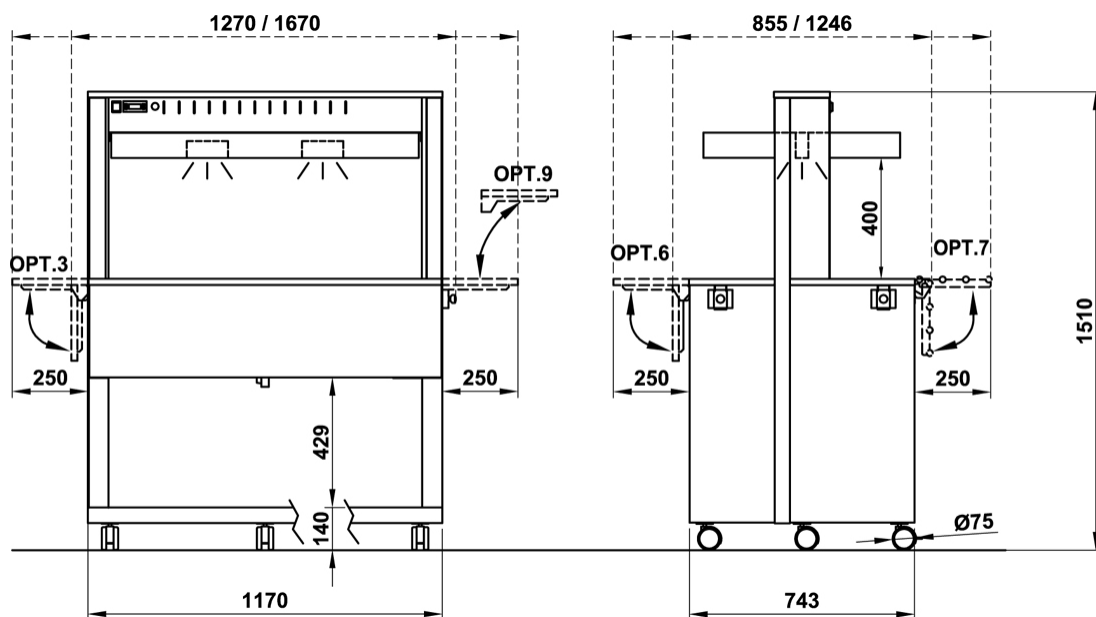
1763 W



3



2



Optional/Options

OPT. 3 EN



Laminated wood folding dish-holder on short side

OPT. 3-SST EN



Foldable dish holder short side - Stainless steel

OPT. 3-TUB EN



Tube st. steel dish-holder on short side

OPT. 4 EN



Full lower closure w/doors

OPT. 5 EN



Removable display grid

OPT. 6 EN



Wooden folding dish-holder

OPT. 7 EN



Folding S/stainless steel tube trayholder

OPT. 8 EN



Foldable tray slide

OPT. 9-A EN



Removable long tray slide on short side in laminated wood

OPT. 9-TUBA EN



Removable long tray slide on short side in stainless steel tube

OPT. 9-SSTA EN



Removable long tray slide on short side in stainless steel

OPT. 9-C EN



Removable tray slide on short side in laminated wood, for wall leaning

OPT. 9C-TUBA EN



Removable tray slide on short side in stainless steel tube, for wall leaning

OPT. 9C-SSTA EN



Removable tray slide on short side in stainless steel, for wall leaning

OPT. 10 EN



Reinforced 125mm. diam steel castors, 2 with brake

OPT. 11/FO EN



Surcharge for contrasting worktop in Formica color

OPT. 14/F EN



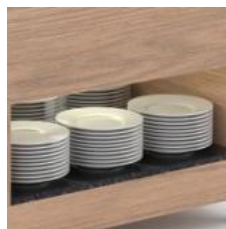
Intermediate floor, compartment mod. refrigerated

OPT. 15-F/LAM EN



Niche for refrigerated modules - Laminated wood

OPT. 15-F/FO EN



Niche for refrigerated modules - Formica

OPT. 16/LAM EN



Upper shelf top with increased depth and rear containing edge - Laminated wood

OPT. 16/FO EN



Upper shelf top with increased depth and rear containing edge - Formica

OPT. 17 EN



Intermediate custom module

OPT. 17CH EN



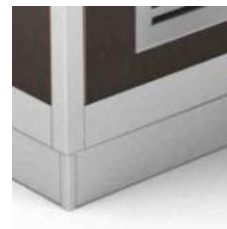
Custom head module

OPT. PZ EN



Feet

OPT. Z EN



Aluminium coated PVC feet skirting

OPT. UK EN



Surcharge for UK plug

OPT. ADS EN



Customized adhesive sticker

OPT. HZ6 EN



Compressor 60Hz

OPT. 45CUT EN



45° cut for optional 6/7/8

Finiture/Finishes

LAR - SILVER



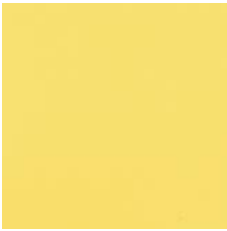
SILVER

LRS - ROSE



STANDARD - LAMINATED
WOOD

LZA - SAFFRON



STANDARD - LAMINATED
WOOD

LIM - LIME



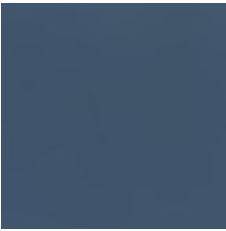
STANDARD - LAMINATED
WOOD

LSK - SKY



SKY

LOC - OCEAN



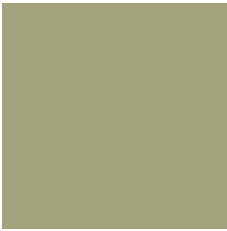
OCEAN

LER - IVY



IVY

LSV - SAGE



SAGE

LCP - CAPPUCCINO



CAPPUCCINO

LTC - CLAY



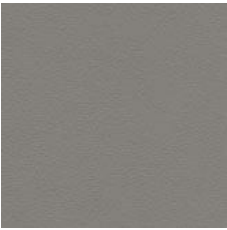
CLAY

LNI - NIAGARA



NIAGARA

LGR - GREY



STANDARD - LAMINATED
WOOD

LBV - VEINED WHITE



STANDARD - LAMINATED
WOOD

LWS - WHITE SAND



WHITE SAND

LBE - BIRCH



STANDARD - LAMINATED
WOOD

LNE - GREY FOG



STANDARD - LAMINATED
WOOD

LOM - ELM



STANDARD - LAMINATED
WOOD

LNO - WALNUT



STANDARD - LAMINATED
WOOD

LWE - WENGE'



STANDARD - LAMINATED
WOOD

LAN - ANTHRACITE



STANDARD - LAMINATED
WOOD

LNV - VEINED BLACK



STANDARD - LAMINATED
WOOD